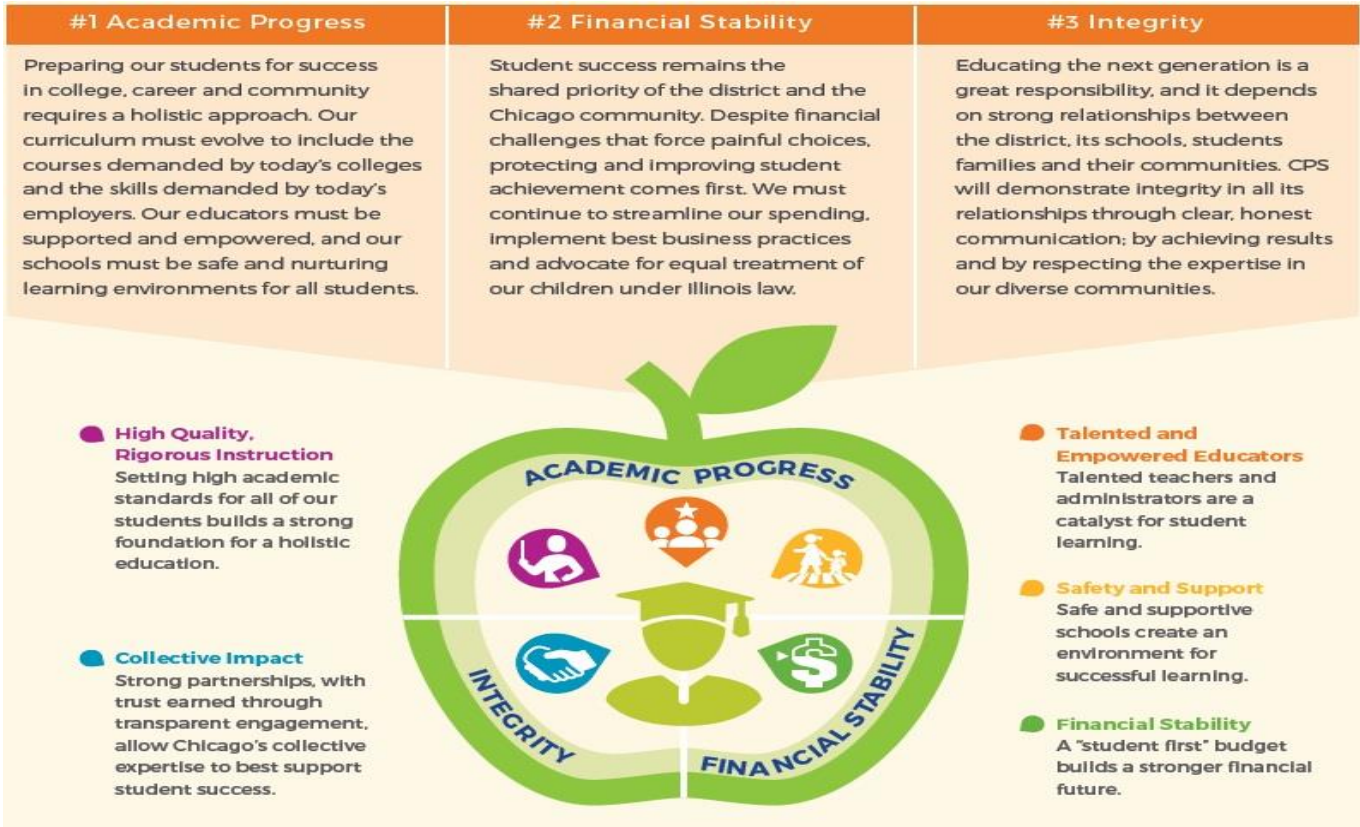


Barry's State of the School

11/13/2018



District Vision



School Mission & Vision

The mission of John Barry Elementary school is to view each child holistically; providing students with the necessary skills for academic success through active engagement; encouraging students to think critically, being reflective and taking ownership of their learning experiences. Every child in every classroom, is provided with an array of academic opportunities through a literacy-rich curriculum infused with technology and tailored to provide differentiation.

What is the SQRP?

- The School Quality Rating Policy (SQRP) is the Board of Education's policy for evaluating school performance.
- It establishes the indicators of school performance and growth and the benchmarks against which a school's success will be evaluated on an annual basis.
- Through this policy, each school will receive a **School Quality Rating** and an **Accountability Status**.

What is the Purpose of the SQRP?

The School Quality Rating and Accountability Status serve the following purposes:

- **Communicating** to parents and community members about the academic success of individual schools and the district as a whole;
- **Recognizing** high achieving and high growth schools and identifying best practices;
- Providing a framework for **goal-setting** for schools;
- Identifying schools in need of targeted or intensive **support**; and
- **Guiding** the Board's decision-making processes around school actions and turnarounds.

How Are Ratings Assigned?

- Schools earn between 1 – 5 points for each metric.
- Points are weighted according to the tables on slide 6 and added together. The school's overall score is also between 1 – 5.
- Based on the overall score (or minimum attainment percentile – see below), the school receives a School Quality Rating and Accountability Status.

Overall Score		Minimum Attainment Percentile	School Quality Rating	Accountability Status
4.0 or more	OR	90th	Level 1+	Good Standing
Between 3.5 and 3.9		70th	Level 1	Good Standing
Between 3.0 and 3.4		50th	Level 2+	Good Standing
Between 2.0 and 2.9		40th	Level 2	Provisional Support
Less than 2.0		--	Level 3	Intensive Support

What Does the School's Status Mean



<p>Good Standing Levels 1+ - 2+</p>	<p>Provisional Support Level 2</p>	<p>Intensive Support Level 3</p>
<p>These schools are meeting or exceeding the minimum performance expectations for CPS schools.</p> <p>While these schools are still bound by federal and state law and CPS policies, they have some autonomy around school improvement planning and budgets. LSCs approve CIWPs in these schools.</p>	<p>These schools are in need of targeted support to keep them moving in the right direction. The CEO may require the following:</p> <ul style="list-style-type: none"> • Drafting a new CIWP • Directing the implementation of the CIWP • Providing additional training for the LSC • Mediating disputes or other obstacles to improvement <p>If the CEO determines the problems are not able to be remediated by the above methods, the CEO may place the school in Intensive Support.</p>	<p>These schools are in need of intensive support to quickly improve the quality of education for students. In addition to the types of support provided under “Provisional Support”, the following actions may be taken*:</p> <ul style="list-style-type: none"> • Replacing the principal • School turnaround • Ordering new LSC elections • Closure <p>*These actions are allowable under Illinois School Code, but will not necessarily happen in all “Intensive Support” schools. A hearing and a Board vote are required for these actions.</p>

What Does SQRP Measure?

ATTENDANCE

DATA QUALITY

GROWTH

SCHOOL CLIMATE

ATTAINMENT

John Barry Elementary School

School ID: 609789 | Network: ISP

School Quality Rating: Level 2+

2018-2019 Accountability Status: Good Standing

Previous School Rating(s):

2017-2018: Level 1 (Good Standing)

2016-2017: Level 1 (Good Standing)

2015-2016: Level 1 (Good Standing)

2014-2015: Level 2 (Provisional Support)

Learn more about the SQRP here: <https://youtu.be/m321Ld0UOVw>

School Quality Rating Indicator	Indicator Score & School Quality Rating Points (of 5 possible)	Indicator Weight (% of total)	Weighted Points
NWEA MAP Growth Indicators—All Students			
National School Growth Percentile – Reading	73rd percentile (4 points)	16.25%	0.65
National School Growth Percentile – Math	47th percentile (3 points)	16.25%	0.4875
% of Students Meeting/Exceeding National Average Growth Norms	54.3 percent (3 points)	10%	0.3
NWEA MAP Growth Indicators—Priority Groups			
African-American Growth Percentile – Reading			
Hispanic Growth Percentile – Reading	76th percentile (5 points)	1.25%	0.0625
English Learner Growth Percentile – Reading	56th percentile (4 points)	1.25%	0.05
Diverse Learner Growth Percentile – Reading	99th percentile (5 points)	1.25%	0.0625
African-American Growth Percentile – Math			
Hispanic Growth Percentile – Math	47th percentile (3 points)	1.25%	0.0375
English Learner Growth Percentile – Math	35th percentile (3 points)	1.25%	0.0375
Diverse Learner Growth Percentile – Math	94th percentile (5 points)	1.25%	0.0625
NWEA MAP Attainment Indicators			
National School Attainment Percentile – Reading (Grades 3-8)	47th percentile (3 points)	5%	0.15
National School Attainment Percentile – Math (Grades 3-8)	39th percentile (2 points)	5%	0.1
National School Attainment Percentile – Reading (Grade 2)	55th percentile (3 points)	2.5%	0.075
National School Attainment Percentile – Math (Grade 2)	56th percentile (3 points)	2.5%	0.075
Other Indicators			
% of Students Making Sufficient Annual Progress on ACCESS	N/A for all schools		
Average Daily Attendance Rate (Grades K-8)	94.8 percent (3 points)	20%	0.6
My Voice, My School 5 Essentials Survey	Organized (4 points)	10%	0.4
Data Quality Index Score	99.8 percent (5 points)	5%	0.25
School Quality Rating Total Weighted Points			3.4

Overall Rating Key

Level 1+	Level 1	Level 2+	Level 2	Level 3
----------	---------	----------	---------	---------

SQRP Score Color Coding (all indicators)

5 points	4 points	3 points	2 points	1 point
----------	----------	----------	----------	---------

Elementary - NWEA GROWTH

 **76% (70%) Hispanic Growth Percentile – Reading**

 **76% (76%) English Learner Growth Percentile – Reading**

 **99% (78%) Diverse Learner Growth Percentile – Reading**

 **47% (39%) Hispanic Growth Percentile – Math**

 **35% (42%) English Learner Growth Percentile – Math**

 **94% (70%) Diverse Learner Growth Percentile – Math**

(2018 %)

Elementary - NWEA Attainment

 **47% (36%) National School Attainment Percentile – Reading (Grades 3-8)**

 **39% (33%) National School Attainment Percentile – Math (Grades 3-8)**

 **55% (36%) National School Attainment Percentile – Reading (Grade 2)**

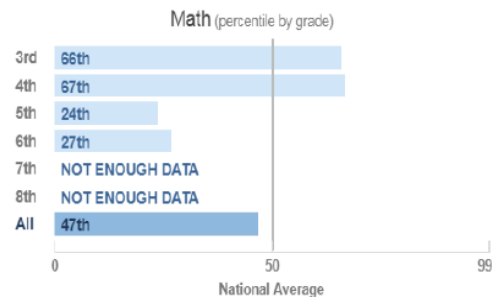
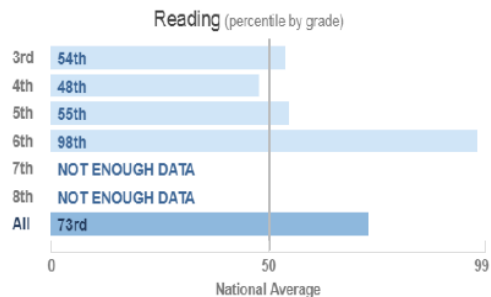
 **56% (41%) National School Attainment Percentile – Math (Grade 2)**

(2018 %)

CPS.edu/schools - screen shot of page -

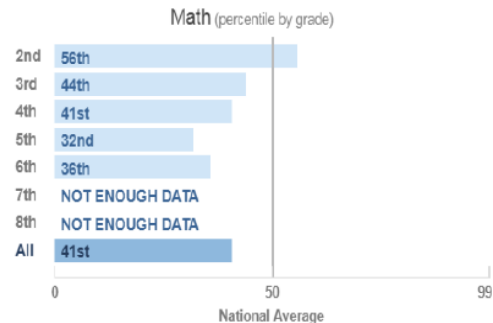
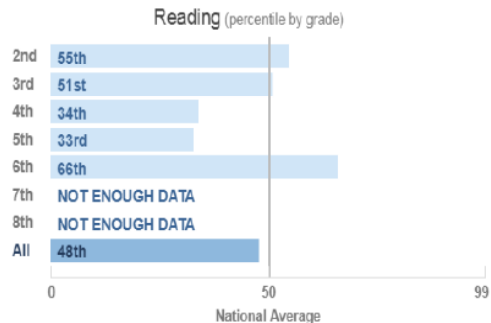
What percent of grade levels with the same starting score, nationwide, grew less or equal to the amount our grade level grew.

Student Growth By Grade Level ABOVE AVERAGE ?



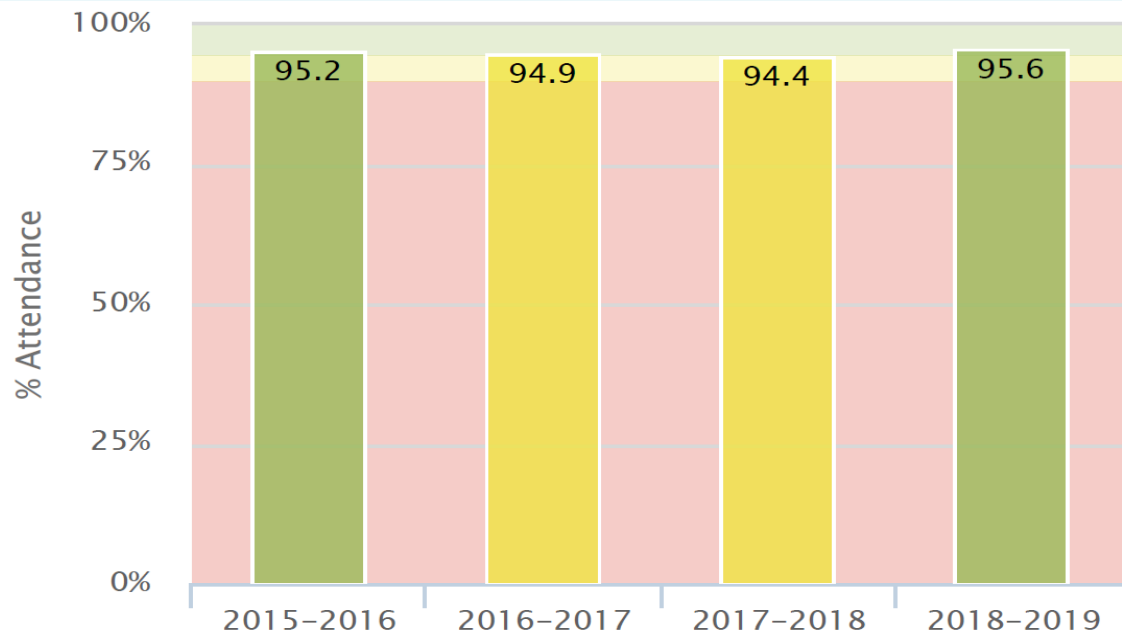
What percent of grade levels, nationwide, had an average score less than or equal to the average score of our grade level

Student Attainment By Grade Level AVERAGE ?



Barry School – Attendance

Student Attendance Rate



Attendance Rate	Year
95.20%	2015-2016
94.91%	2016-2017
94.44%	2017-2018
95.59%	2018-2019

Additional Data Points

 **94.8 % (95.4%) Average Daily Attendance Rate (Grades K-8)**

 **ORGANIZED - My Voice, My School 5 Essentials Survey**

 **99.8% (99.3%) Data Quality Index Score**

(2018 %)

School CIWP Priorities

- **What we have accomplished**

- *Balanced Literacy Program for Reading and Writing*
- *Eureka Math Curriculum using*
- *Dual Language up to 4th grade this year*
- *MTSS Program*

- **What we have remaining**

- *Integration of Science/Social Studies & Daily instruction of SS/SC*
- *Access of grade level curriculum and goal setting w D Learners*
- *Small Group Instruction / Progress Monitoring*

School CIWP - We need parents to reach our goal!

How can YOU help us...

- Send your student to school everyday
- Communicate with your student's teacher regularly
- Check your students school folder daily
- Have your student sit down to read daily for 30 minutes
- Be involved at the school (classroom, field trips, etc)
- Volunteer opportunities available all the time
- Attend our 2nd Cup of Coffee with the Principal at least once a quarter

2015-2018 Accomplishments



2015 – Level 1 School



2015 – Good Standing

2015 – Pre-K Gold Circle

2015 – Arts Excelling School



2017 – ISP School

2017 – Exemplary SEL School

2015-2018 Accomplishments

- *Prek-4th Dual Language Program*
- *2 Security Officers*
- *Full-Time Pre Kinder Program*
- *1 Full-Time Case Manager*
- *1 Full-Time Counselor*
- *1 Full-Time Dual Language Coordinator (paid by OLCE)*